

Relationship between Age of Iraqi Awassi Ewes and Responses to Superovulation Protocols

*Mohsen Fadhil Mohsen

&

**Abbas Fadhil Daham

*Ministry of Agricultur, Al-Diwaniya, Iraq

**Department of Surgery and Obstetrics, College of Veterinary Medicine, University of Al-Qadisiyah, Iraq

Correspondence E-mail: vet.post22.41@qu.edu.iq,
abbas.daham@qu.edu.iq.

Abstract:

The current study aimed to investigate the relationship between the age of ewes subjected to various superovulation programs and the response of those ewes to the programs under study through the standard fertility parameters adopted in this type of studies.

Seventy healthy Awassi ewes were divided into seven equal groups (10 ewes for each) whose ages ranged from 2.5 to 7 years, with two age categories for each of the seven study groups, (the group of ewes less than 4 years old and the group of ewes aged 4 years and older) as follows: Control group (c) that did not receive any treatment (G1): a group of long-term progesterone sponges (14 days) with eCG injections on the day of the sponges' withdrawal, then GnRH injections on the day after the sponges were withdrawn. Group (G2) was the same as group (G1), but without GnRH injections. Group (G3) received short-acting progestin (CIDR) in the same design as (G1), while group (G4) received (CIDR) in the same design as group (G2), but for 7 days only days for both groups (G3, G4). While group (G5) was injected with PGF 2α in two doses 9 days apart, the eCG hormone was injected one day before the second dose, then GnRH was injected one day after the second dose of PGF 2 . The last group (G6) is similar to group (G5), but without the GnRH injection.

The results recorded a superiority for ewes within the age category of 4 years and older in most of the study groups in the parameters of the twinning rate, and litter size rate, compared to the age category of less than 4 years, with the opposite in respect to litter size rate, when all groups recorded superiority for age category of 4 years and older with some exceptions. While no differences were recorded between the two age categories under study in the rest of the fertility parameters, namely the estrus rate,

lambling rate and survival rate. The current study conclude that the best age for ewes subjected to superovulation programs should be confined Under 4 years old.

key words: Awassi, age, fertility parameters, Superovulation, ewes



This is an open access article licensed under a [Creative Commons Attribution- Non-Commercial 4.0 International License](https://creativecommons.org/licenses/by-nc/4.0/).

Introduction:

The physiology, morphology, and hormone profile of the genital organs all undergo cycling changes during the estrous cycle, which is the rate at which female reproductive organs become functional following puberty (1). According to (2), the estrous cycle of Awassi ewes in Iraq lasted between 15 and 20 days, averaging 17.5 days from August to March. During the breeding season, a ewe's long phase of estrus can last anywhere from 20 to 36 hours, on average (3). The photoperiod, ewe age, and the presence of a ram in the flock all affect how long the estrous phase lasts. At the start or finish of the breeding season, the duration of estrus is shorter and can be as little as three to six hours (4). The ewe is a seasonally polyoestrous animal, meaning that it can only reproduce during a specific season and is sexually active during that time (5). The term "short-day breeders" refers to ewe that are exposed to short or falling day lengths, which induces oestrous, while long or increasing photoperiods commence seasonal anoestrous, or the non-breeding season (6). The degree of seasonality varies among breeds. According to (7), the majority of Syrian Awassi ewes breed between late June and early September, however the breeding season lasts from June to December (8). Because most of them reproduce seasonally, ewes are

thought to have low reproductive efficiency because they have extended lambing intervals (9). Reproduction is the most economically significant characteristic in sheep production, and it is modifiable with hormone therapies (10). In order to coordinate estrus and promote conception, these hormonal therapies are employed in the breeding of sheep (11). Estrus synchronization is the reproductive process manipulated to allow sheep in a herd to accept mating and pregnancy at the same or near times of the year (12). The Optimal use of this technology in reproductive function enables us to tune in to estrus, increase the rate of ovulation, and increases the reproductive efficiency of agricultural animals (13). Prostaglandin (PGF₂α), which is based on a system used solely during the breeding season, was used to synchronize estrus by ending the luteal phase by regression of the corpus luteum(14).

As not every stage of the estrous cycle responds to therapy in the same way, the procedure uses a double injection technique. In sheep, the LH peak surge occurs approximately 62–64 hours after injection, and the mean period from treatment to estrus occurrence was about 2 days (15). According to (16), ewes' estrus synchronization with vaginal sponges impregnated with flurogestone acetate

(FGA) and eCG therapy is an efficient. Controlled Internal Drug Release (CIDR) Devices.

CIDR is T shaped apparatus which is safe to use on young ewes, easy to administer, inexpensive, and does not collect vaginal secretions or bacteria

Materials and Methods

2.1. Experimental animals

The experimental protocol was completed in the Thi-Qar Governorate / Al-Shatrah District private lands. Seven groups of ten local breed ewes each, ranging in age from two to seven years, used in this study. The investigation was prolonged from September 2023 to April

2.2. Experimental design

A total of 70 ewes in 7 groups were included in this study, which employed 6 protocols (10 animals per group, ages 2 to 5 years) with a control group that received no treatment. The treatments were described as follows:

The control group (c) was left untreated.

Group 1 (G1): Using a specialized device, long-term progesterone intravaginal sponges (PIVS) were placed in the vagina. For fourteen days, the sponges were inside the vagina. After the sponge was withdrawn on day 14 and 500 IU were administered intramuscularly, GnRH was delivered one day after sponge withdrawal (WD).

Group 2 (G2): Use the same protocol as G1, excluding the injection of

2.3. Detection of the estrus

Animal reaction rate: A ram was used to observe ewes twice a day for an hour in

because it is made of rubber, which lowers the risk of vaginal infections and improves the technique of unifying estrus (17).

The present study was conducted to investigate the relationship between age of synchronized Awassi ewes and response to superovulation protocols by study different fertility parameters (especially rate of multiple births and litter size ate.

2024. Each group received three rams that were between two and four years old. To ensure their health and absence of illnesses, the animals underwent a thorough general and specialized clinical assessment. They also had a history of normal lambing. Prior to the study, the animals were identified by various colors.

GnRH.

Group 3 (G3): 7-day estrus synchronization with short-term progesterone (CIDR) combined with an eCG injection during withdrawal (WD) and GnRH injection one day post-CIDR withdrawal:

Group 4 (G4): The technique is the same as in A, except GnRH is not used.

Group 5 (G5): Double dose (shoots) of PGf2 α spaced nine days apart, eCG injection the day before the second dose, and a single dose of GnRH the day following the second dose of PGf2 α are used to synchronize estrus.

Group 6 (G6): Use the same procedure as in G1, but omit the injection of GnRH.

order to detect estrous. On the second day after PMSG administration, estrous response rate a measure of the proportion of estrous ewes was determined by

introducing an active fertile ram to the ewes under study. The data was then

3.4. Mating

A fertile rams would tend to estrous ewes. The evaluation of breeding soundness was conducted on the rams by several means,

3.5. Fertility parameters: Fertility parameters were determined using the following formulas in the study, in accordance with (18):

Twinning rate (%) = number of ewes giving birth to twins/ number of pregnant ewes × 100
Litter size = total number of lambs/number of ewes giving birth

Lambing rate (%) = number of ewes giving birth/number of pregnant ewes × 100

Estrus rate (%) = number of ewes showing estrus/number of ewes in the group × 100

Estrus onset = time between sponge withdrawal or the last injection and start of estrus

Statistical analysis

SPSS (Statistical Package for Social Sciences) version 31 for Windows was used to statistically analyze the gathered data. Percentages and statistics were used

Results

Ewes aged 4 years and over showed superior rates of twin births compared to those aged less than 4 years, although the difference was not significant between the two age categories (Table1). Most of the groups subject to the study protocols recorded superiority for those aged less than four years in the parameters of conception rate and pregnancy rate (Figures1 and 2), with the opposite in

summed cumulatively to indicate the beginning of estrous.

including semen analysis and a general clinical examination with a focus on the male gentle system.

Conception ratio (%) = number of pregnant ewes/number of mating ewes × 100

Pregnancy rate (%) = number of pregnant ewes/number of ewes in the group × 100

Survival rate (%) = number of living lambs/number of lambs born × 100

In addition to calculate the **Gender of lambs also** determined at a birth time according to (19).

Lamb weight according to (20) when determined at the birth time by the electronic balance of single and twin lambs.

to define qualitative data. For acceptable comparisons between categorical variables, the chi-square test and Fisher's exact test were employed. According to (21), a P value of ≤ 0.05 was deemed statistically significant.

respect to litter size rate, when all groups recorded superiority for age category of 4 years and older (except for G1 and G5) (Figures 3).

While the age of the ewes subject to the study did not show any effect on the rates of response to estrus to the hormonal programs used, nor did any effect of age appear on the birth rates and survival rates in the study groups, including the control group, where all three aforementioned

parameters recorded 100% response rates to the study protocols (Figures 4,5,6).

Table 1. relationship between age of tested ewes and multiple births in different groups.

Groups	Age interval	Total No.	Type of birth			X2/P value
			single	twin	Triple	
Control	Less than 4	4	2(100)	0(0)	0(0)	0/1
	≥ 4 years	6	4(66.6)	0(0)	0(0)	
G1	Less than 4	1	-	-	-	-
	≥4 years	9	4(44.4)	5(55.5)	0(0)	
G2	Less than 4	4	3(75)	1(25)	0(0)	1.21/ 0.27
	≥4 years	6	1(16.6)	2(33.3)	0(0)	
G3	Less than 4	1	1(100)	0(0)	0(0)	0.32/ 0.57
	≥4 years	9	5(55.5)	2(22.2)	0(0)	
G4	Less than 4	7	4(57.1)	2(28.5)	0(0)	0.178/ 0.67
	≥4 years	3	1(33.3)	1(33.3)	0(0)	
G5	Less than 4	4	1(25)	0(0)	1(25)	3.32/ 0.19
	≥4 years	6	3(50)	2(33.3)	0(0)	
G6	Less than 4	6	2(33.3)	1(16.6)	0(0)	0.13/ 0.70
	≥4 years	4	1(25)	1(25)	0(0)	

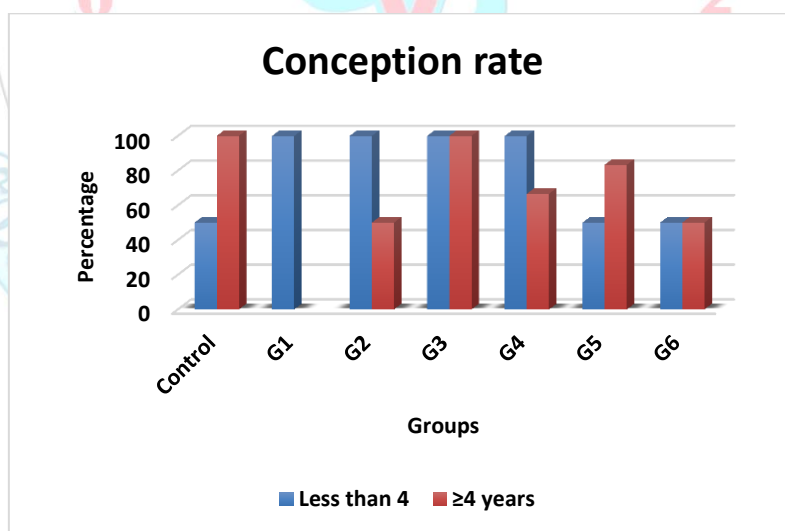


Figure1. Relationship between age of tested ewes and conception rate in different groups.

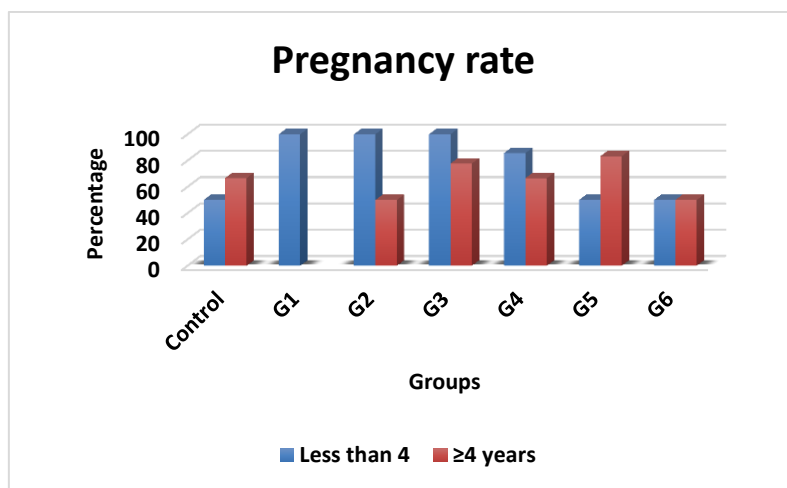


Figure2. Relationship between age of tested ewes and pregnancy rate in different groups.

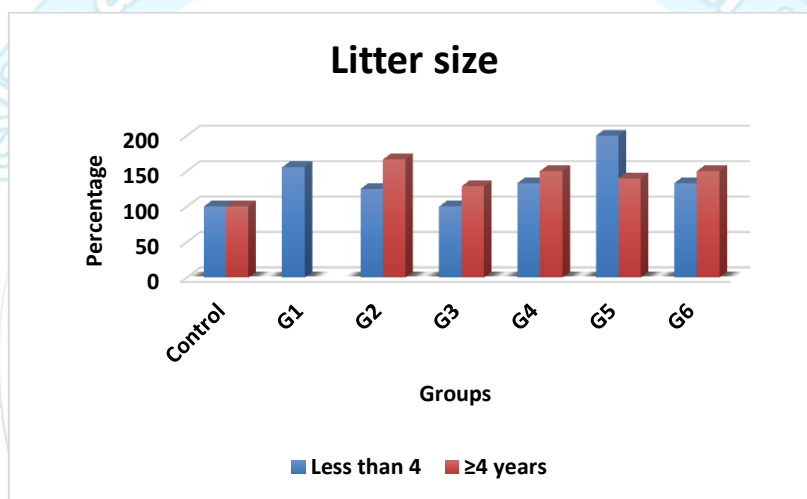


Figure3. Relationship between age of tested ewes and litter size rate in different groups.

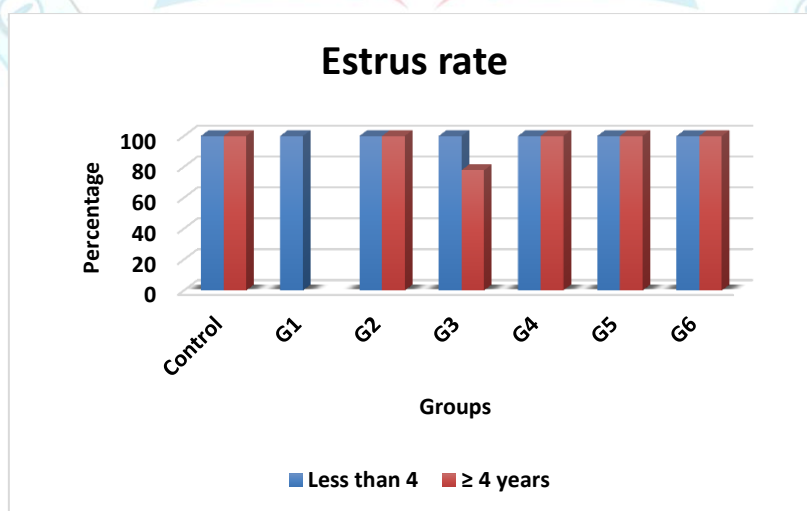


Figure 4.Estrus rate in relation to age of tested ewes

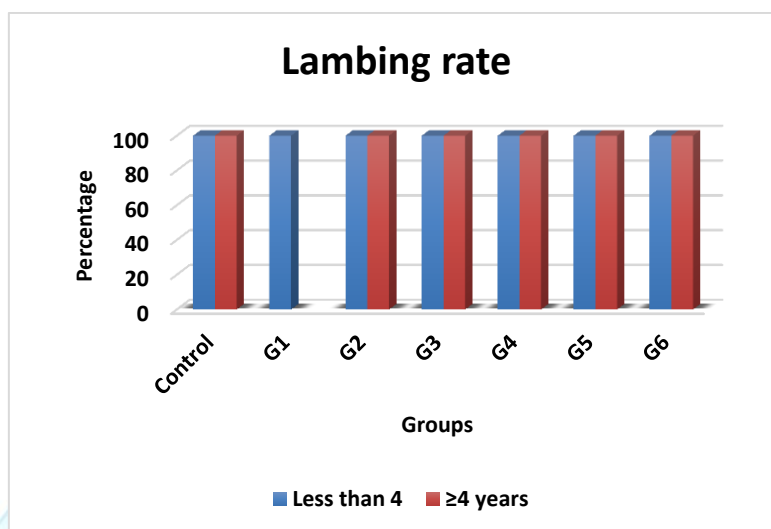


Figure 5.Lambing rate in relation to age of tested ewes

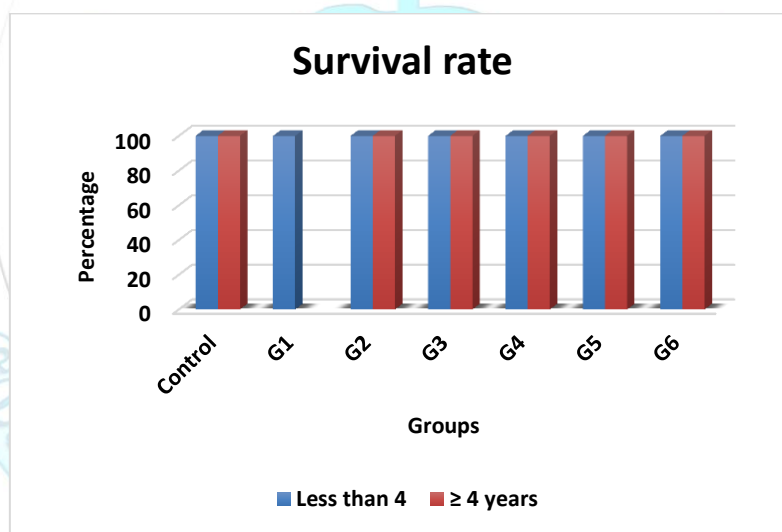


Figure 6.Survival rate in relation to age of tested ewes

Discussion

Age and many other factors had an impact on the reproductive activity, which in turn affected the breeding of huge numbers of ewes (9). In this study, ewes aged 4 years and over showed superior rates of twin births compared to those aged less than 4 years, although the difference was not significant between the two age categories (Table1). The reason for this superiority

may be due to the fact that most of the ages of the ewes tested in all study groups are 4 years old, and this age is the best at which ewes reach sexual maturity (the age at which ewes are at the peak of their reproductive production) as a result of the optimal activity of their endocrine system. This result is somewhat similar to the result of (22) in the same Iraqi Awassi ewes, where they indicated that the best

age for ewes used in superovulation programs to produce twins in this breed is limited to (2-4) years, noting that the aforementioned researchers used the long-term vaginal progesterone sponge protocol only, which is the same protocol that recorded the highest twinning rate (55.5%) in the current study. However, the result of this study contradicts (23), which did not record any differences between standardized groups in Pirlak sheep that aged between 2-5 years, and (24) in Rmanov ewes aged 2-3 years. This is due to the fact that the study of these researchers was not designed to explore a relationship between the age of the ewes used and various fertility parameters.

Most of the groups subject to the study protocols recorded superiority for those aged less than four years in the parameters of conception rate and pregnancy rate, with

Conclusions

The current study was conclude that there are good indicators for the effect of the age of ewes subjected to superovulation protocols on most fertility parameters, and

Acknowledgement

The authors acknowledge the technical assistance provided by the University of Al-Qadisiyah's College of Veterinary Medicine. The authors would also like to express their gratitude to Prof. Dr. Ali M. Ghazi for his help with the statistical analysis of the study's data.

Funding statement

There was no funding for this study

the opposite in respect to litter size rate, when all groups recorded superiority for age category of 4 years and older (except for G1 and G5). The reason for the superiority of ewes aged 4 years and over in the litter size parameter may be due to the integration of the activity of the endocrine system and the reproductive system of these ewes that have reached the age of sexual maturity compared to the age groups under 4 years. The other probable reason for these differences is the differences in responses according to protocol applied. In general, the good response to different fertility parameters in different groups and different age categories may be due to the fact reported by (25) in that the eCG can increase pregnancy and twinning rates in breeds characterized by low litter size. This fact is applies perfectly on Awassi ewes which naturally have twin ratio of 5% only (26).

that the best age that gave the best response to the most important parameters, especially the rate of twinning and the litter size, is the age of 4 years. Therefore, we recommend selecting ewes of ages limited to 3-4 years for superovulation protocols.

Declaration of Conflict of Interest

the authors declare that There is no conflict of interest

Ethical of approval

This research complies with the ethics rules of the University of Al-Qadisiyah, Iraq's Faculty of Veterinary Medicine ethics permission number: 4/9/2023).

References

1- Granados LBC, Dias AJB ,Sales MP. General aspects of reproduction in sheep and goat. Fields of Goytacazes-RJ, College of Germany. 2006.

2- Toma BS . Effect of methyl acetoxy progesterone total serum cholesterol on Awassi ewes. M.Sc. Thesis. College of Vet. Med. Baghdad .Univ.1977.

3- Kridli RT, Al-Khetib SS. Reproductive responses in ewes treated with eCG or increasing doses of royal jelly. Animal reproduction science. 2006 Mar 1;92(1-2):75-85.

4- Ramírez AI, Tiburcio GI, Cruz-Espinoza F, Herrera-Corredor AC, Gallegos-Sánchez J. Photoperiod and its relationship to sheep reproduction. Agro Productividad. 2021 Nov 8.

5- Rosa HJ, Bryant MJ. Seasonality of reproduction in sheep. Small ruminant research. 2003 Jun 1;48(3):155-71.

6- Hafez ES, Hafez B. Folliculogenesis, egg maturation, and ovulation. Reproduction in farm animals. 2000 Mar 1:68-81.

7- Epstein H. Biology of reproduction, suckling regimes, growth, and development. The Awassi sheep with

special reference to the improved dairy type. Rome: FAO. 1985:81-140.

8-Thomson EF, Martini MA, Tutwiler RN. Sheep management in Syria: the case of reproduction and fertility.2003: 1-4.

9- Arthur GH , Noakes DE , Parkinson TG , England G C .Veterinary Reproduction and Obstetrics. 9th ed. Printed in China. 2008 , Pp: 44-45, 69-70, 316.

10- Atsan T, Emsen E, Yaprak M, Dagdemir V, Gimenez Diaz CA. An economic assessment of differently managed sheep flocks in eastern Turkey. Italian Journal of Animal Science. 2007 Jan 1;6(4):407-14.

11- Yilmaz M, Altin T. Growth characteristics in lambs of estrus synchronized ewes in grower conditions. Turkish Journal of Veterinary & Animal Sciences. 2011;35(6):421-9.

12- Ávila-Castillo BR, García-Flores EO, Molina-Mendoza P, Peralta-Ortiz J, Sánchez-Torres-Esqueda MT. Estrous synchronization in hair sheep using a protocol based on prostaglandin+ GnRH. CienciaUAT. 2019 Jun;13(2):141-51.

13- Hameed N, Khan MI, Zubair M, Andrabi SM. Approaches of estrous synchronization in sheep: developments during the last two decades: a review. Tropical animal health and production. 2021 Oct;53(5):485.

14- Abu Gazal . Different estrous induction protocols during the non-breeding season

in Assaf ewes. MSC, Thesis. An-Najah National University.2010.

15- Fierro S, Gil J, Viñoles C, Olivera-Muzante J. The use of prostaglandins in controlling estrous cycle of the ewe: A review. *Theriogenology*. 2013 Feb 1;79(3):399-408.

16- AL-Jumaily MT. Effect of progestin-impregnated sponges and progesterone injection on estrous appearance and pregnancy rate in Awassi ewes: comparative study. *Anbar Journal Of Agricultural Sciences*. 2011;9(2).

17- Kasimanickam R, Asay M, Firth P, Whittier WD, Hall JB. Artificial insemination at 56 h after intravaginal progesterone device removal improved AI pregnancy rate in beef heifers synchronized with five-day CO-Synch+ controlled internal drug release (CIDR) protocol. *Theriogenology*. 2012 May 1;77(8):1624-31.

18- Cinar M, Ceyhan A, Yilmaz O, Erdem H. Effect of estrus synchronization protocols including PGF₂ α and GnRH on fertility parameters in hair goats during breeding season. *The Journal of Animal & Plant Sciences*,2017 , 27(4): 1083-1087.

19- Festa-Bianchet M. Nursing behaviour of bighorn sheep: correlates of ewe age, parasitism, lamb age, birthdate and sex. *Animal Behaviour*. 1988 Sep 1;36(5):1445-54.

20- Fornazari R, Mateus Ó, Correia TM, Quintas H, Maurício R, Conradi A, Francisco LF, Álvaro A, Valentim R. Estrus synchronization and artificial insemination with fresh and chilled semen in Assaf ewes. *Agricultural Sciences*. 2018;9(1):8-22.

21- Daniel W. *Biostatistics: A Foundation for Analysis in the Health Sciences*. 9th edition. John Wiley and Sons. INC. USA.2009.

22- Daham A, Jaber A, Al-Saaidi J. Age as a Determinant of the Effectiveness of Intravaginal Sponges Impregnated with Progesterone and Equine Chorionic Gonadotropin for Multiple Births Induction of Awassi Ewes. *Veterinary Medicine International*. 2023 Mar 14;2023.

23- Kuru M, Sogukpinar O, Makav M, Cetin N. Effect of barium selenate injections on fertility of Pirlak ewes subjected to estrus synchronization during non-breeding season. *Medycyna Weterynaryjna-Veterinary Medicine-Science And Practice*. 2017;73(8).

24- Kuru M, Kuru BB, Kacar C, Demir MC, Cetin N. Effect of oestrus synchronization with different lengths of progesterone-impregnated sponges and equine chorionic gonadotropin on reproductive efficiency in Romanov ewes during the non-breeding season. *Acta Veterinaria Brno*. 2022 Jul 21;91(3):243-50.

25- Boscós CM, Samartzi FC, Dellis S, Rogge A, Stefanakis A, Krambovitis E. Use of progestagen–gonadotrophin treatments in estrus synchronization of sheep. *Theriogenology*. 2002 Oct 15;58(7):1261-72.

26- Abdoli R, Mirhoseini SZ, Hossein-Zadeh NG, Zamani P, Moradi MH, Ferdosi MH, Gondro C. Genome-wide association study of first lambing age and lambing interval in sheep. *Small ruminant research*. 2019 Sep 1;178:43-5.

